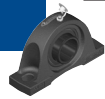
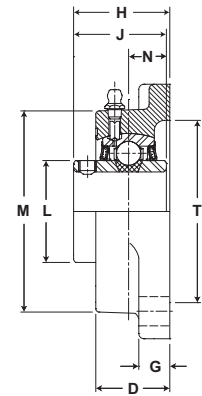
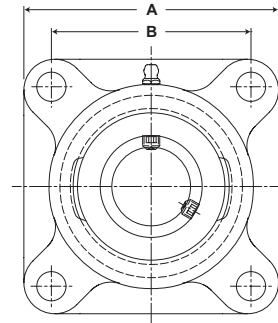


SEALMASTER® Performance Mounted Ball Bearings



- Duty:** Medium
- Rolling Elements:** Ball
- Housing:** Cast Iron Four Bolt Flange
- Self Alignment:** +/- 2 Degrees
- Lock:** Setscrew
- Seal:** Felt
- Optional Seal:** Contact
- Temperature:** -20° to 220°F



MSF Series Medium Duty Four-Bolt Flange Units - Setscrew Locking

BORE DIAMETER		PART No.	BEARING INSERT NO.	BASIC DYNAMIC RATING LB/N	DIMENSIONS inch / mm										BOLT SIZE	UNIT Wt. lb/kg
inch	mm				A	B*	D	G	H	J	N	L	M	T CORE		
15/16		MSF-15	3-015	4381	4 1/4	3 1/4	1 11/64	17/32	1 9/16	1 1/2	5/8	1 19/32	3 7/32	2 7/8	7/16	3.6
1	25	MSF-16	3-1	19487	108.0	82.6	29.8	13.5	39.7	38.1	15.9	40.5	81.8	73.0		1.63
		MSF-305	5305													
1 3/16		MSF-19	3-13	5782	4 5/8	3 5/8	1 11/32	9/16	1 3/4	1 11/16	11/16	1 55/64	3 23/32	3 5/16	1/2	4.1
1 1/4	30	MSF-20	2-14	25718	117.5	92.1	34.1	14.3	44.5	42.9	17.5	47.2	94.5	84.1		1.86
		MSF-306	5306													
1 7/16		MSF-23	3-17	7340	5 1/8	4	1 1/2	9/16	2 1/64	1 15/16	3/4	2 1/16	4 5/64	3 1/2	1/2	5.5
	35	MSF-307	5307	32648	130.2	101.6	38.1	14.3	51.2	49.2	19.1	52.4	103.6	88.9		2.49
1 1/2		MSF-24	3-18	7901	5 3/8	4 1/8	1 9/16	9/16	2 3/64	1 15/16	3/4	2 19/64	4 21/64	3 7/8	9/16	6.0
	40	MSF-308	5308	35144	136.5	104.8	39.7	14.3	52.0	49.2	19.1	58.3	109.9	98.4		2.72
		MSF-308	5308													
1 11/16		MSF-27	3-111	7889	5 5/8	4 3/8	1 9/16	9/16	2 5/32	2 1/32	3/4	2 15/32	4 33/64	4	9/16	6.8
1 3/4	45	MSF-28	3-112	35090	142.9	111.1	39.7	14.3	54.8	51.6	19.1	62.7	114.7	101.6		3.08
		MSF-309	5309													
1 15/16		MSF-31	3-115	9752	6 3/8	5 1/8	1 3/4	13/16	2 5/16	2 3/16	7/8	2 23/32	5 3/16	4 1/4	5/8	10.5
2	50	MSF-32	2-2	43377	161.9	130.2	44.5	20.6	58.7	55.6	22.2	69.1	131.8	108.0		4.76
		MSF-310	5310													
2 3/16		MSF-35	3-23	11789	6 7/8	5 5/8	1 15/16	13/16	2 11/16	2 9/16	1	2 63/64	5 7/16	5	5/8	12.1
2 1/4	55	MSF-36	2-24	52437	174.6	142.9	49.2	20.6	68.3	65.1	25.4	75.8	138.1	127.0		5.49
		MSF-311	5311													
2 7/16		MSF-39	3-27	13971	7 3/8	5 7/8	2 5/16	11/16	3	2 3/4	1 1/16	3 7/16	6 1/8	5 10/77	5/8	16.4
2 1/2	65	MSF-40	3-28	62143	187.3	149.2	58.7	17.5	76.2	69.9	27.0	87.3	155.6	130.3		7.44
		MSF-313	5313													
2 11/16		MSF-43	3-211	14839	7 3/4	6	2 3/8	1	3 3/16	3 1/16	1 5/16	3 41/64	6 1/2	5 22/25	3/4	20.6
	70	MSF-314	5314	66004	196.9	152.4	60.3	25.4	81.0	77.8	33.3	92.5	165.1	149.4		9.34
		MSF-314	5314													
2 15/16		MSF-47	3-215	17412	7 3/4	6	2 11/16	7/8	3 1/2	3 1/4	1 5/16	3 59/64	6 3/4	5 14/25	3/4	21.4
3	75	MSF-48	3-3	77449	196.9	152.4	68.3	22.2	88.9	82.6	33.3	99.6	171.5	141.2		9.71
		MSF-315	5315													
3 3/16		MSF-51	3-33	18681	8 7/16	6 3/4	2 3/4	1	3 17/32	3 3/8	1 11/32	4 5/32	7 1/4	6	3/4	26.7
3 1/4	80	MSF-52	2-34	83093	214.3	171.5	69.9	25.4	89.7	85.7	34.1	105.6	184.2	152.4		12.11
		MSF-316	5316													
3 7/16		MSF-55	3-37	21566	8 7/16	6 3/4	3	1	3 31/32	3 25/32	1 9/16	4 25/64	7 3/4	6 22/71	7/8	30.0
3 1/2		MSF-56	3-38	95926	214.3	171.5	76.2	25.4	100.8	96.0	39.7	111.5	196.9	160.3		13.61
		MSF-56	3-38													
3 15/16		MSF-63	3-315	29905	10 9/16	8 5/16	3 13/16	1 1/4	5	4 5/8	1 15/16	5 11/64	9 1/4	7 11/25	1	55.1
4	100	MSF-64	3-4	133017	268.3	211.1	96.8	31.8	127.0	117.5	49.2	131.4	235.0	189.0		24.99
		MSF-320	5320													
4 7/16		MSFD-71	3-47D	37482	12 3/4	10	4 3/4	1 9/16	6	5 3/4	2 7/8	6 11/32	11 1/2	9 1/2	1 1/4	115.0
4 15/16		MSFD-79	3-415D	166720	323.9	254.0	120.7	39.7	152.4	146.1	73.0	161.1	292.1	241.3	32	52.16

Units MSFD-71 and MSFD-79 are equipped with four set screws: two on each end of inner race extensions.
 Units MSFD-71 and MSFD-79 are not available with contact seal.
 *To obtain bolt circle, multiply B x 1.414".
 For Medium Duty Bearing Inserts-Single Lock see page G-95.
 For Medium Duty Bearing Inserts-Double Lock see page G-97.
 Sizes 2 7/16 and above come standard with Time Saving™ Axial Groove. See page G-22 for more information.

Metric dimensions for reference only.
 Not all parts are available from stock. Please contact customer service for availability (800) 626-2120.
 For more information on bearing capabilities outside of our standard offering, please contact Application Engineering (800) 626-2093.